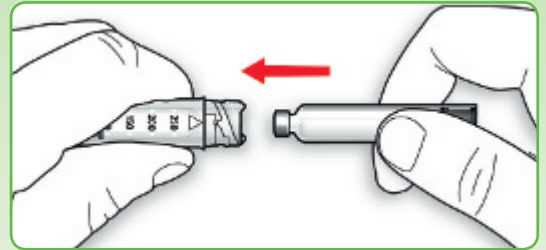


These instructions are simply guidelines. Please read through the package leaflet carefully before using the ClikSTAR® for the first time.

1 Insert the cartridge

Pull or twist off the pen cap and unscrew the cartridge case from the pen casing. Check the inscription on your cartridge to ensure that you are using the right insulin and insert the new cartridge in the cartridge case.

Screw the cartridge case firmly back onto the pen casing until it clicks into place. The arrow markings on the cartridge case and the pen casing must be directly opposite each other.



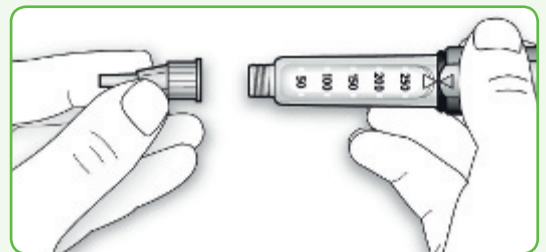
2 Check the insulin

Check the inscription on your cartridge to ensure that you are using the right insulin. Check the consistency of the insulin. **IMPORTANT:** mix insulin suspensions!



3 Attach the needle

Make sure that the needle is straight when attached.



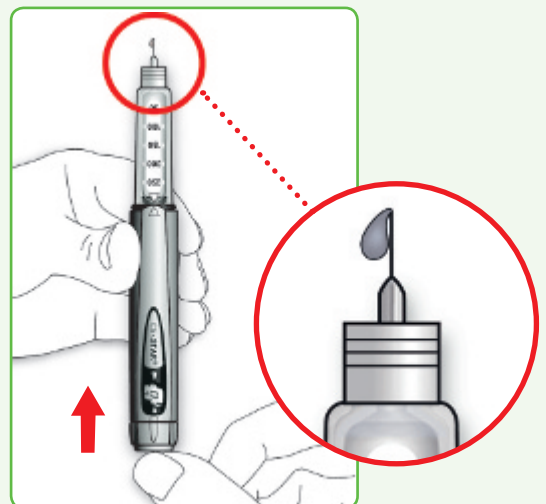
4 Perform a safety test

Carry out a safety test before every injection in order to remove air bubbles and to check that the pen and the needle are working properly.

Set a dose of 2 units by rotating the dosing ring.

Remove the external needle protection cap and keep it handy in order to use it. It is to unscrew the needle from the pen after the injection. Remove the inner needle protection cap and dispose of it.

Hold the pen with the needle point upwards and press the injection button in completely. Check whether insulin emerges from the needle tip.



You may have to perform the safety test several times before insulin emerges.

- If no insulin emerges, check whether there are air bubbles present and repeat the safety test twice more in order to remove the bubbles.
- If insulin is still not emerging the needle may be blocked. Change the needle and try again.
- If no insulin emerges even after changing the needle, make sure that the insulin cartridge is correctly inserted (see step 1) and then repeat the safety test.
- If insulin still does not emerge, the cartridge or the pen is probably faulty. Do not use this cartridge or pen.

5

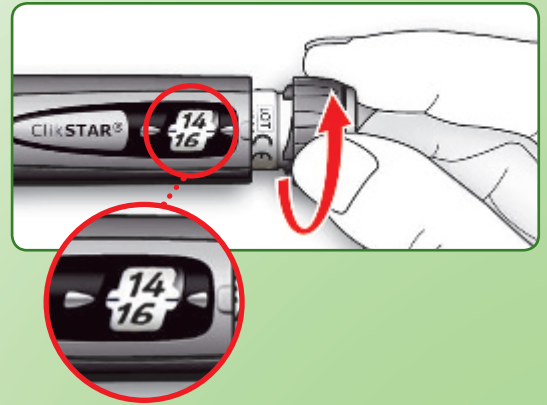
Set the dose

Set the required dose by rotating the dosing ring.

In the shown example a dose of 15 units has been selected. Your dose may differ. If you have turned it too far, you can reduce the set dose again by turning the dosing ring back. The line or the number in the centre of the dosage window shows the set dose.

You can only set as many units with the dosing ring as are still contained in the cartridge. Do not attempt to rotate the dosing ring further by using force. If there are not enough units remaining in the cartridge

- you can either inject what is left in the cartridge and administer the remainder with a new cartridge
- or use a new cartridge for the entire dose.

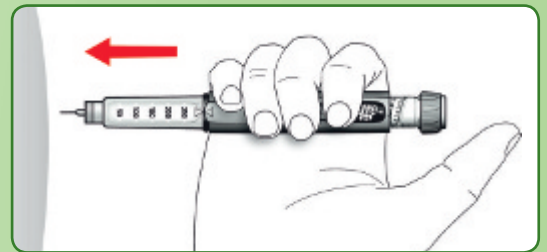


6

Inject the dose

Use the injection technique recommended to you by your medical professionals.

Inject the needle into the skin and slowly press the injection button in completely. Hold the injection button completely pressed in. Slowly count to ten before retracting the needle from the skin. The number in the dose window goes back to "0" during the injection.



7

Remove and dispose of the needle

Reattach the outer protection cap to the needle and use it to unscrew the needle from the pen as shown in the diagram.

Make sure that the needle is disposed of safely. Observe the appropriate safety recommendations (e.g. ask your medical specialist team) in order to avoid accidental injury by the needle and the transmission of infectious diseases.

Put the pen cap back on the pen and store the pen until the next injection.

This KlikStar® is for your personal use only. Do not give it to other diabetics.

If you use various types of insulin you should use a **different colour of pen** for each insulin.

If you cannot follow all the instructions yourself, only use the KlikStar® with the help of a person who is able to understand the directions for use.

