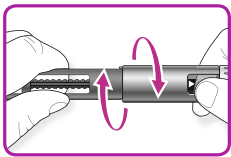


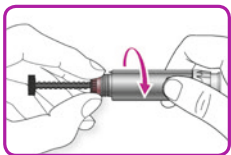
Quick operating guide

This is a shortened usage guide. Please also pay attention to the detailed operating instructions which are supplied with every JuniorSTAR® pack.

1. Inserting a cartridge



A Pull off the pen cap.



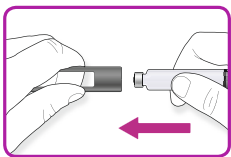
B Unscrew the cartridge holder from the pen body.

– If applicable, remove the empty insulin cartridge.

C Fully rewind the plunger to the starting position.

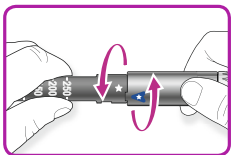
– If the dose window does not show "0", push the injection button completely down.
– Hold the plunger reset ring.
– Turn the **pen body** anti-clockwise until it cannot be turned further and the plunger is fully retracted.

✧ **Do not try to push the plunger back in.**



D Insert a new cartridge.

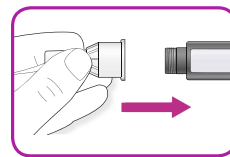
– Ensure that you are using the correct insulin and then insert the new cartridge.



E Screw the insulin cartridge holder firmly back on to the pen body.

2. Attaching the needle

✧ **First please check that you are using the correct insulin.**



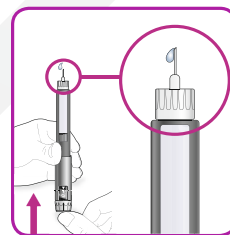
A Attach the needle ensuring it is straight.

– Ensure that the needle sits firmly (depending on the type of needle, it is either screwed on or pushed on).

Performing a safety test

✧ **Before each injection, perform a safety test. The safety test removes air bubbles and ensures that pen and needle are working properly.**

A Select a dose of 2 units by turning the dosage selector and remove the protective needle caps.



B Hold the **pen with the needle **pointing upwards** and **press** the injection button all the way in.**

C Check whether insulin is coming out of the needle tip.



Please note: The markings on the cartridge holder and the pen body must be exactly facing each other. If this is not the case, then start again from Step C.

If you are unable to insert the cartridge, check whether:

- ✧ The cartridge has been inserted the correct way round.
- ✧ The plunger has been screwed right back.
- ✧ Do not use force.



Please note: You may have to repeat the safety test several times until insulin comes out. If no insulin comes out after three safety tests:

- ✧ **Change the needle and try it again.**
- ✧ **Check that the cartridge has been correctly inserted and is not damaged.**
- ✧ **Repeat the safety test.**

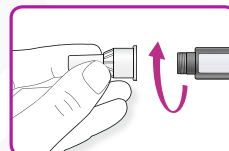
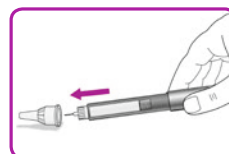
4. Selecting the dose



A Check that the dose window shows "0" following the safety test.

B Rotate the injection button to set the required dose.

In the example shown, a dose of 15.5 units has been selected. Your dose may be different from this.



A Place the outer protective needle cap on a flat surface. Guide the needle into the outer protective needle cap.

In order not to accidentally injure yourself with the needle, do not try to push the inner protective needle cap back onto the needle.

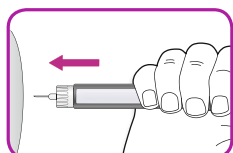
B Squeeze the outer protective needle cap to grip the needle and use it to **unscrew the needle from JuniorSTAR®** while holding the pen at the cartridge holder.

C Discard the used needle (e.g. in a puncture resistant container).

D Replace the pen cap onto JuniorSTAR® and store this pen safely.

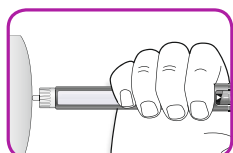
5. Injecting the dose

☆ Use the injection technique that was shown to you by the healthcare professional.



A Insert the needle into the skin.

B Deliver the dose by pressing the injection button slowly all the way in. The number in the dose window will return to "0" while you inject.



C Keep the injection button pressed all the way in.

– Slowly count to 10 before withdrawing the needle from the skin.



Please note: If you are administering the injection to another person, particular caution is required in order to avoid accidental injuries with the needle and the transmission of infectious diseases.

Follow recommended safety measures for removal and disposal of needles (contact your healthcare professional) in order to reduce risk of accidental needle injury and transmission of infectious diseases.



0180 22 22 010

(Calls from German landlines 6ct/call, mobile prices max. 42ct/minute)

Sanofi-Aventis Deutschland GmbH

The *ServiceCenter Diabetes* is happy to help you with any questions you may have. You can also find further information on the Internet at www.juniorstar.de.



Pen manufacturer:
Haselmeier GmbH

SANOFI DIABETES
Zusammen erreichen wir mehr.



033605